



# Smart Construction Quick3D

Smartphone point cloud generating application

Conversion of the site into 3D becomes easier, cheaper, and faster with an iPhone/iPad.



You can use it immediately after downloading the application even on a site where drones or laser scanners are not permitted!

You can easily turn the terrain into a point cloud.

## STEP 1 Shooting of the site with iPhone/iPad

You only need to download the Smart Construction Quick3D application and hold your device up on the site.



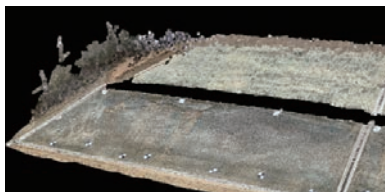
## STEP 2 Acquisition of coordinates with rover

Coordinates of rating points and test points are measured by rovers such as Smart Construction Rover.



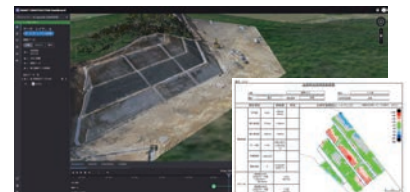
## STEP 3 Point cloud generation

The site can be precisely and quickly converted into 3D.



## STEP 4 Using it for managing the site

Calculation of soil volume and preparation of a form can be performed using applications such as Smart Construction Dashboard.

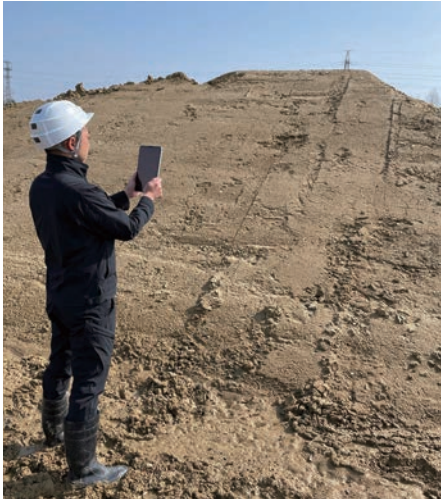


Generalized Table for Acceptability Judgment of Finished Forms

# Features of the service

## Operation is possible with iPhone/iPad.

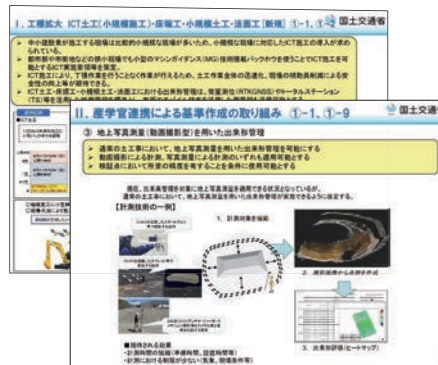
The site can be immediately converted into 3D by installing the application on an iPhone/iPad. No drone or laser scanner is needed. Anyone can easily operate it.



## In compliance with as-built form management guidelines of the 2022 new standards.

\*Limited to Japan only  
This application complies with as-built form management guidelines using terrestrial photogrammetry, which were revised in March 2022. Point cloud within  $\pm 5$  cm\* can be generated using GCP (Ground Control Points). The site for small-scale construction pavement work is eligible for gaining a point if this application is used.

\*Please note that the degree of precision of  $\pm 5$  cm is not guaranteed depending on usage conditions.



Source: Ministry of Land, Infrastructure, Transport and Tourism website

## Greater convenience by linking with our applications and devices

Coordinates of rating points and test points can be imported automatically by linking with Smart Construction Rover. In addition, progress management of the site and soil volume calculation can be conducted smoothly by linking with Smart Construction Dashboard.



### Q. How do you convert pictures into 3D?

**A.** We convert pictures taken with an iPhone/iPad into 3D by applying SfM processing. It is also possible to export the point cloud using LiDAR technologies.

### Q. Does it have to be linked with Smart Construction Rover or Smart Construction Dashboard?

**A.** You can use the application without linking, but it is more convenient when linked.

### Q. Which applications can open the 3D data?

**A.** It can be browsed with applications that can open LAS files.

### Q. Can I use the application with Android?

**A.** The application is only for iPhone/iPad.

### Q. Do you provide support for operation?

**A.** Please contact the Support Center first.

For questions about our products, services, and their introduction, please contact us.

**Smart Construction Support**  
<https://support.smartconstruction.com>



**EARTHRAIN Ltd.**  
Izumi Garden Tower 29F 1-6-1,  
Roppongi, Minato-ku,  
Tokyo 106-6029 Japan

Inquiries