



Smart Construction Retrofit

NETIS Registration Number : QS-200052-VE
Technical Term : Excavator 3D Guidance System (Retrofit)

Survey

Plan

Construction

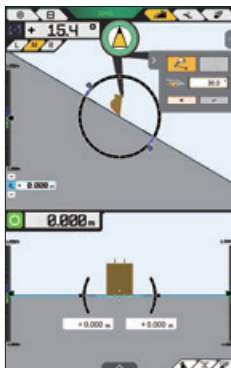
Inspection



Smart Construction Retrofit: Features

Simple design surface creation

"2D machine guidance mode" ready.
Even if GNSS information is not available, it is possible to create a simple design surface from the current position.



Data Transmission through Network

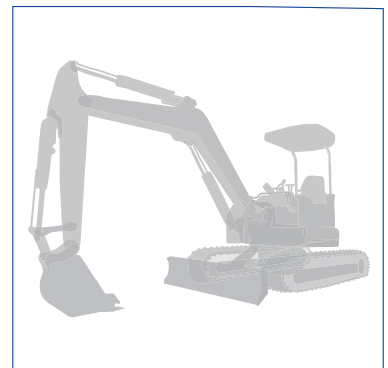
The bucket edge information of the machine and the design data of the construction site are transmitted to the tablet terminal. It eliminates the need for stakes and greatly improves work efficiency.



Convert to
Smart Construction Pilot
Format

Easy ICT of construction machines

Regardless of the construction machine manufacturer or size, it is possible to convert suitable sized machines for the construction site to be ICT-ready at low cost.



Smart Construction Retrofit: Benefits

ICT construction is possible by installing it on your hydraulic excavator / mini hydraulic excavator at low cost.

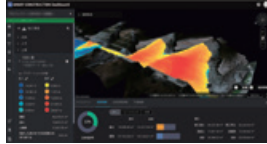
Integration with Smart Construction suite

Smart Construction Rover



- Send site correction data as a base station
- Retrieve localization data

Smart Construction Dashboard



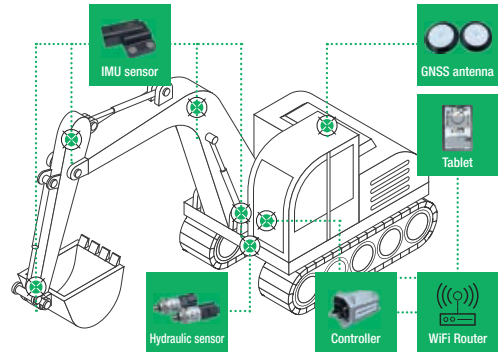
Displays in 3D job done by ICT construction machines

Smart Construction Fleet



Payload function enables to understand volume loaded into each truck

Smart Construction Retrofit



Use as base station



It can be used as a base station in areas where correction data is difficult to obtain. Construction possible with stable accuracy.

View your work history in 3D Viewer

Bucket edge data of the area done can be confirmed in 3D. It is possible to grasp and manage the site progress.

Soil Volume Management

Excavator's bucket can be used to determine the amount of loaded soil, and it can be used to load trucks with different loading capacity.

Terms of Use	Device	Registration	Contract	Data	Others
	<ul style="list-style-type: none"> •Personal Computer •Smart Construction Retrofit Kit •Tablet •Tablet Holder •Mobile Router •Hydraulic sensor(an optional product) 	 <p>Smart Construction Account</p>	 <ul style="list-style-type: none"> •Smart Construction Pilot application •Network Service 	<ul style="list-style-type: none"> •3D design data (such as xml data) •Localization data (TP3・GC3, etc.) 	<p>Base station (depending on the site environment)</p>

For questions about our products, services, and their introduction, please contact us.

Smart Construction Support
<https://support.smartconstruction.com>



EARTHBRAIN Ltd.
 Izumi Garden Tower 29F 1-6-1, Roppongi,
 Minato-ku, Tokyo 106-6029 Japan

Inquiries